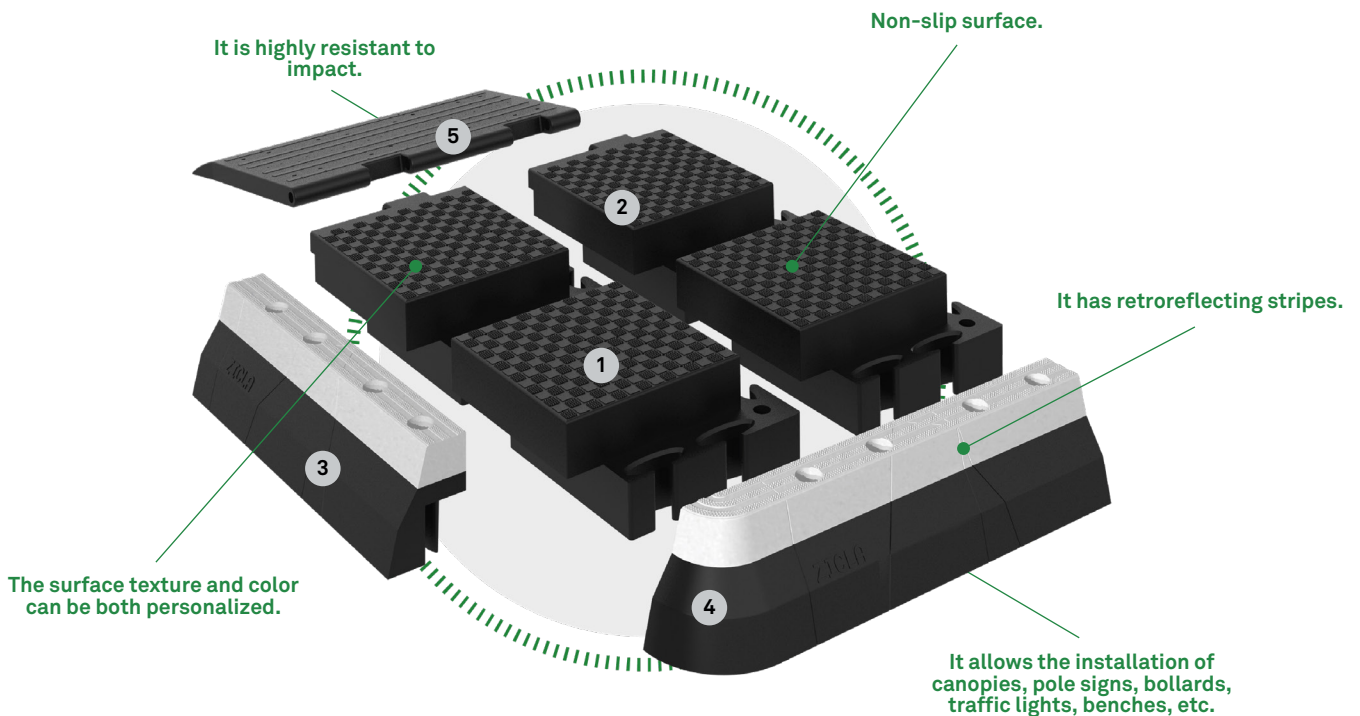




Vectorial®

Modular system to improve accessibility in the streets.



1 Main Module
w: 420 mm
l: 420 mm
h: 180 mm

📦 10,7 kg
🌱 8,98 kg of CO₂ equiv/u

2 Main Module with hinge
w: 420 mm
l: 480 mm
h: 180 mm

📦 11,8 kg
🌱 9,82 kg of CO₂ equiv/u

3 Front curbs
w: 139 mm
l: 700 mm
h: 180 mm

📦 9,93 kg
🌱 11,85 kg of CO₂ equiv/u

4 Right & left curbs
w: 139 mm
l: 839 mm
h: 180 mm

📦 11,2 kg
🌱 13,03 kg of CO₂ equiv/u

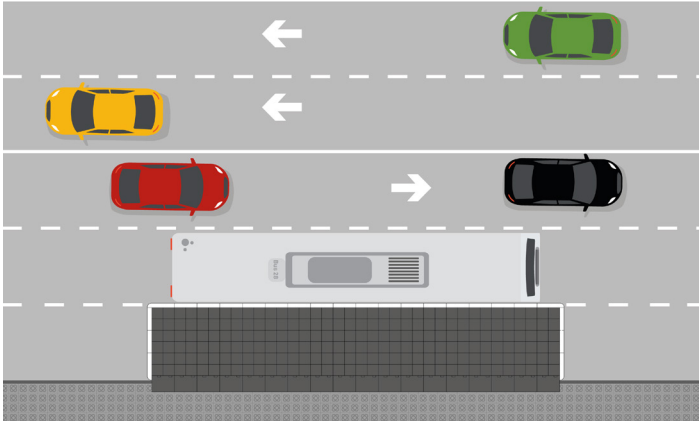
5 Ramp to the sidewalk
w: 700 mm
l: 506 mm
h: 40 mm

📦 18,4 kg
🌱 31,46 kg of CO₂ equiv/u

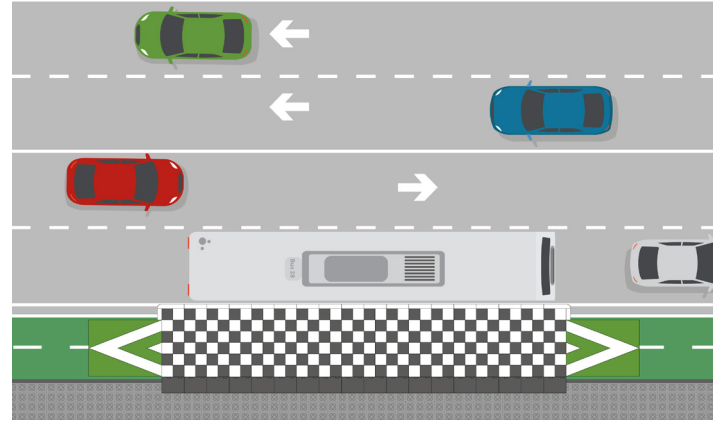
Ramp to the road
w: variable measure
l: variable measure

📦 Variable weight

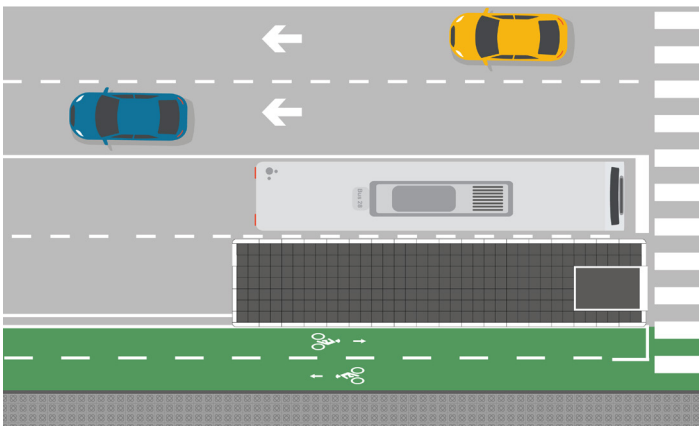
Vectorial® System configurations.



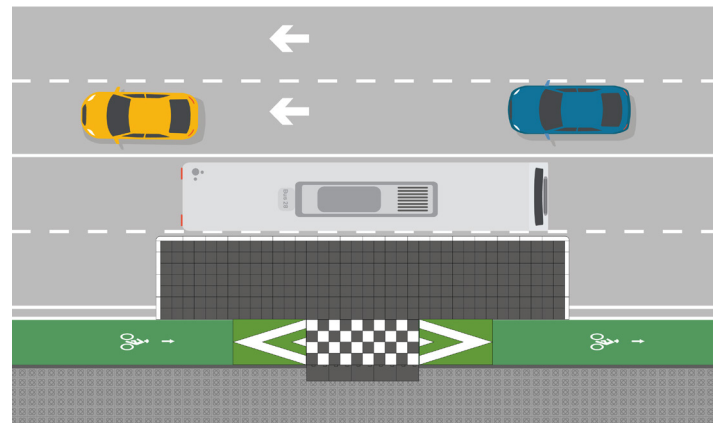
BOARDING BULB STOP
12m BUS (12,87 m x 3 m).



SHARED CYCLE TRACK BOARDER
12m BUS (17,5 m x 3 m).



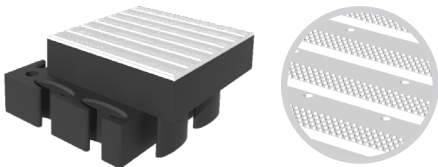
FLOATING ISLAND BOARDER
12m BUS (12,87 m x 2,72 m).



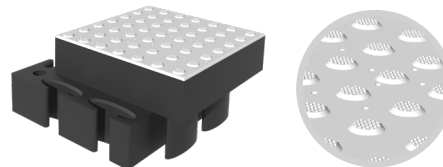
BIKE LANE BOARDER WITH ACCESS BRIDGE
12m BUS (12,874 m x 4,4 m).

Universal design elements.

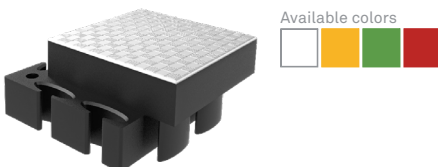
TACTILE DIRECTIONAL SURFACE



TACTILE WARNING SURFACE



COLOR CUSTOMIZATION



Optionally, the main modules and ramp to the sidewalk can include tactile surface or be painted of different colors to comply with local regulations.

Made in.
EU
1st year of
production.
2009

Awards.
2011 Design for
Recycling awards

Certificates.
"Design for all,
good practice"

Ecolabels.
DGQA

Patent.
Spanish office
Patent and Trademark
200930858

Design registration.
Ohim
001757261-0001/2
008171466-0001/2/3
United States copyright
Tx 7-906-875